

A photograph of a grand, ornate hallway with a series of arches. The ceiling and walls are highly detailed with intricate carvings and gold leaf accents. The floor is covered in a dark, patterned carpet. Several white, tiered lamp stands with large, conical shades are placed along the left side of the hallway. In the distance, a blue cabinet is visible. The lighting is a mix of warm yellow and cool blue tones. A white diagonal graphic element is present in the top left corner.

MEETINGS AND EVENTS



CHICAGO
CITY CENTER



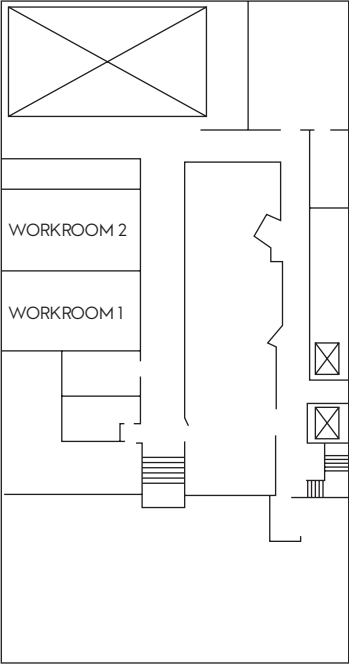
GREAT ROOM I



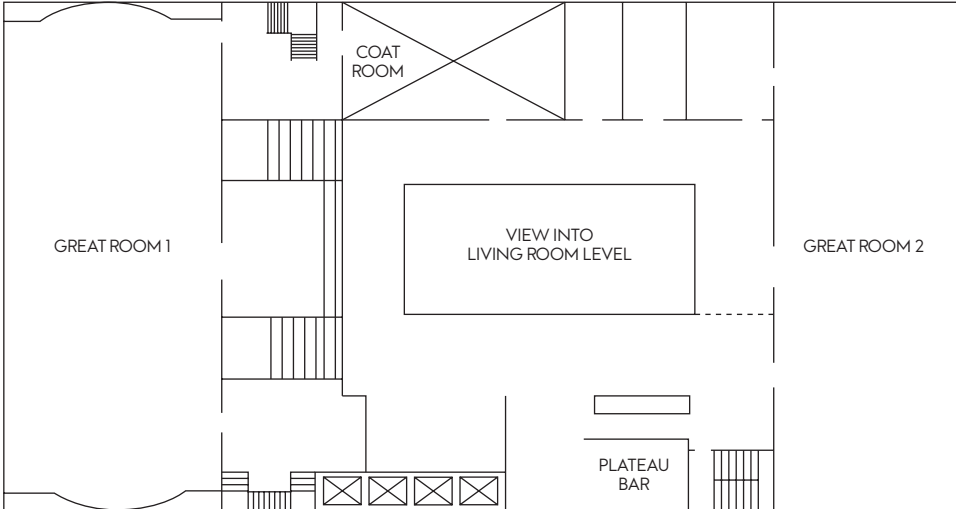
GREAT ROOM II

MEETING AND EVENT FLOOR PLANS

LOWER LEVEL



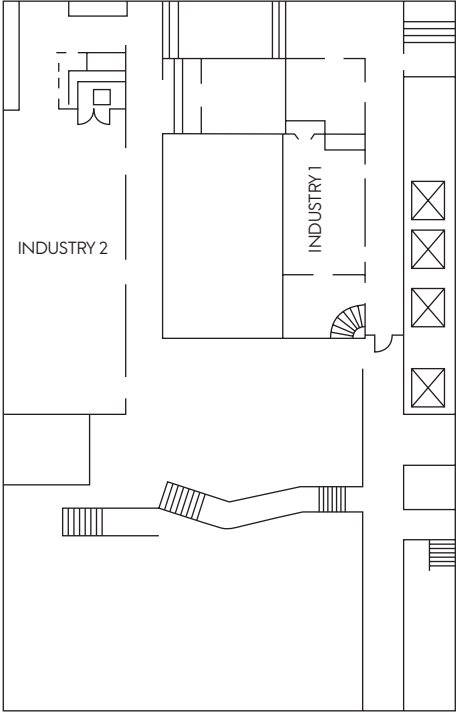
PLATEAU LEVEL



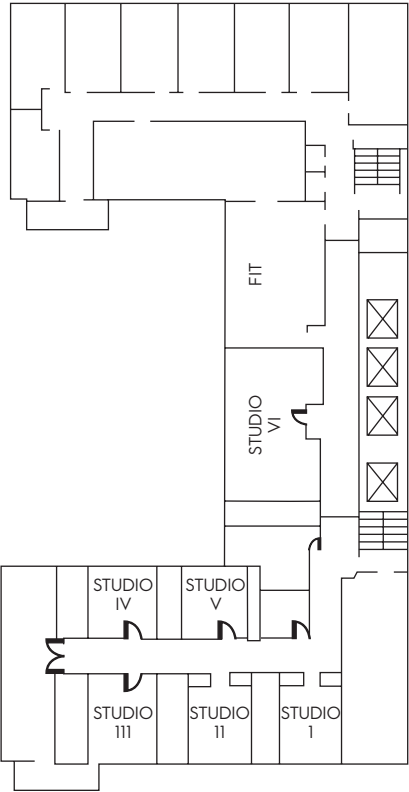
For more information on planning your get-together, contact our dedicated event specialist at 312.917.5645.

MEETING AND EVENT FLOOR PLANS

SECOND FLOOR



THIRD FLOOR



For more information on planning your get-together, contact our dedicated event specialist at 312.917.5645.

CAPACITY CHART

Room Name	Dim. (l x w)	Area	Height	Banq.	Thtr.	Conf.	Rec.	Class	U-Shp.
Plateau Level									
Plateau Pre-Func.	-	1,392ft ²	18.0'	-	-	-	250	-	-
Great Room 1	54.0' x 77.0'	4,158ft ²	25.0'	300	475	60	450	250	60
Great Room 2	83.0' x 30.0'	2,555ft ²	18.0'	170	240	50	250	150	50
Lower Level									
Workroom 1*	18.0' x 33.0'	594ft ²	8.0'	50	45	30	35	24	25
Workroom 2*	19.0' x 37.0'	703ft ²	8.9'	50	45	32	40	26	25
Second Floor									
Industry 1	38.0' x 18.0'	692ft ²	8.2'	50	50	24	40	35	20
Industry 2*	63.0' x 23.0'	1,679ft ²	9.0'	90	125	40	125	70	40
Third Floor									
Studio I	27.0' x 13.0'	351ft ²	8.0'	20	20	15	30	15	-
Studio II	29.0' x 15.0'	435ft ²	8.0'	20	20	20	30	20	12
Studio III	32.0' x 15.0'	480ft ²	8.0'	30	30	20	30	24	20
Studio IV	18.0' x 13.0'	234ft ²	8.0'	10	10	10	-	8	-
Studio V	17.0' x 15.0'	255ft ²	8.0'	10	10	10	-	8	-
Studio VI	42.0' x 18.0'	756ft ²	8.0'	50	45	25	60	32	25

* Non ADA-accessible